

Education Module Catalog:

Partnering to Help
You Better Serve Your
Patients and Grow
Your Practice



TABLE OF CONTENTS

DDS Lab Education Module Catalog

Introduction to DDS LAB 1

Introduction to the MY DDS LAB Case Management Portal and Mobile App 1

Why Digital? 2

IOS Series: First Impressions Matter

Module 1: Optimal Tooth Preparation and Tissue Management 3

Module 2: Intraoral Scanning for Single-Unit and Multiple-Unit Crowns 4

Module 3: Intraoral Scanning for Restorative Rx Three-Unit Bridge 5

Module 4: Restorative Rx Implant Restorations 6

Module 5: Intraoral Scanning for Full-Mouth Restorations..... 7

Module 6: iRecord & Invisalign 8

Restorative Protocols—Single-Tooth Restorations..... 9

DDS Lab facilities meet the highest standards, and fabricate exclusively with FDA-approved materials.



INTRODUCE

Introduction to DDS LAB

Program Description

DDS Lab is more than just a dental laboratory, DDS Lab delivers efficiency and education, enabling growth and enhancing patient outcomes. This program describes in detail its unique value proposition focusing on three pillars of excellence:

DESIGN: Technology driven designs for the best clinical outcome.

DELIVER: Excellence, efficiency, education delivered with accountability.

SUPPORT: An elite team of Field Support Technicians dedicated to expanding your technical and clinical knowledge.



Design. Deliver. Support.

Empowering your practice



VID001 Rev A 05/22

INTRODUCE

Introduction to the MY DDS LAB Case Management Portal and Mobile App

The My DDS Lab complimentary, comprehensive case management portal and mobile app was designed to save busy practices time and money. This program describes how using My DDS Lab can provide better results by reducing Rx errors, minimizing production delays, and more consistent patient scheduling.



MyDDS LAB mobile app also available for production status updates and to view/upload images while you are on the go.

DIGITAL

DDS

DA

Why Digital?

Program Description

The evolution of digital dentistry has provided dental professionals with a new standard in delivering restorations with optimal aesthetic and functional outcomes.

CAD/CAM technology and intraoral scanners allow restorative clinicians to collaborate with the dental laboratory to design and fabricate patient-specific restorations for optimal outcomes. This program will provide an overview of the benefits of integrating fully digital workflows into everyday clinical practice, including using intraoral scanners. A detailed step-by-step approach to integrating intraoral scanning into the practice workflow will be presented.



Learning Objectives

After the program, participants should be able to:

- ✓ Explain the basic principles of digital workflows in clinical practice for greater efficiency, improved patient experiences, and optimal restorative outcomes.
- ✓ Integrate intraoral scanning into the everyday workflow of the dental practice.
- ✓ Describe the benefits of intraoral scanning for patients, the laboratory, and the practice.
- ✓ Summarize the digital workflow starting with the intraoral scan through communication with the dental laboratory for optimal restorative outcomes.

DIGITAL

DDS

DA

First Impressions Matter— Optimal Tooth Preparation and Tissue Management

Program Description

The evolution of digital dentistry has provided dental professionals with a new standard in delivering restorations with both aesthetic and functional outcomes. The combination of CAD/CAM technology and intraoral scanners allows restorative clinicians to collaborate with the dental laboratory to design and fabricate patient-specific restorations for optimal outcomes. This program will provide the guiding principles for optimal tooth preparation and soft-tissue management—a prerequisite for optimizing accuracy and clinical outcomes with intraoral scanning and CAD/CAM restorations.



CEU:1



Learning Objectives

After the program, participants should be able to:

- ✓ Have a working knowledge of the guiding principles for tooth preparation and soft-tissue management.
- ✓ Describe the optimal crown preparation sequence prior to intraoral scanning.
- ✓ Perform optimal margin preparations.
- ✓ Identify the most appropriate burs for tooth preparation.
- ✓ Select the correct size/type of retraction cord, and properly pack cord in the sulcus prior to intraoral scanning.
- ✓ Explain the nuances of crown preparation for various restorations, including all-ceramic crowns.

DIGITAL

DDS

DA

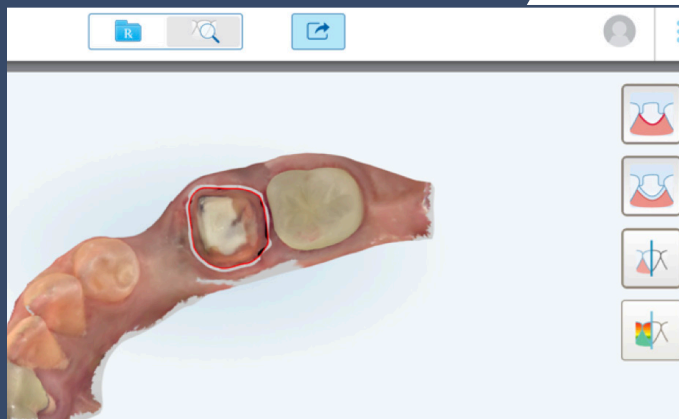
First Impressions Matter— Intraoral Scanning for Single- Unit and Multiple-Unit Crowns

Program Description

The evolution of digital dentistry has provided dental professionals with a new standard in delivering restorations with both aesthetic and functional outcomes. The combination of CAD/CAM technology and intraoral scanners allows restorative clinicians to collaborate with dental laboratory technicians to design and fabricate patient-specific restorations for optimal outcomes.

This program will provide an overview of the benefits of intraoral scanners and restoration fabrication. A detailed step-by-step approach to integrating intraoral scanning into the workflow of the practice will be presented. This program is suitable for all members of the dental team.

 **CEU:1**



Learning Objectives

After the program, participants should be able to:

- ✓ Explain the basic principles for the clinical use of intraoral scanners.
- ✓ Integrate intraoral scanning into the everyday workflow of the dental practice.
- ✓ Have a working knowledge of an intraoral scanner for impressions to fabricate implant-supported restorations.
- ✓ Describe the benefits of intraoral scanning for patients, clinicians, dental laboratory technicians, and the practice.
- ✓ Summarize the digital workflow starting with intraoral scanning through communication with the dental laboratory for optimal restorative outcomes.

DIGITAL

DDS

DA

First Impressions Matter— Intraoral Scanning for Restorative Rx Three-Unit Bridge

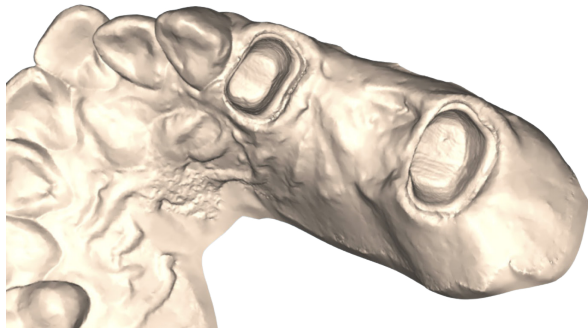
Program Description

The evolution of digital dentistry has provided dental professionals with a new standard in delivering restorations with both aesthetic and functional outcomes. The combination of CAD/CAM technology and intraoral scanners allows restorative clinicians to collaborate with the dental laboratory to design and fabricate patient-specific restorations for optimal outcomes.

This program will provide an overview of the use of intraoral scanners for the design and restoration of three-unit bridges. A detailed step-by-step approach to integrating intraoral scanning into the workflow of the practice will be presented. This program is suitable for all members of the dental team.



CEU:1



Learning Objectives

After the program, participants should be able to:

- ✓ Explain the basic principles for the clinical use of intraoral scanners.
- ✓ Integrate intraoral scanning into the everyday workflow of the dental practice.
- ✓ Have a working knowledge of using an intraoral scanner for imaging for single-unit and multiple-unit restorations on natural teeth.
- ✓ Describe the benefits of intraoral scanning for patients, clinicians, and dental laboratory technicians.
- ✓ Summarize the digital workflow starting with the intraoral scan through communication with the dental laboratory for optimal restorative outcomes.

DIGITAL

IMPLANTS

DDS

DA

First Impressions Matter— Restorative Rx Implant Restorations

Program Description

The evolution of digital dentistry has provided dental professionals with a new standard in delivering restorations with both aesthetic and functional outcomes. The combination of CAD/CAM technology and intraoral scanners allows restorative clinicians to collaborate with the dental laboratory to design and fabricate patient-specific restorations for optimal outcomes.

This program will provide an overview of the benefits of intraoral scanners and design principles used in abutment design and restoration fabrication to optimize aesthetics and function for implant-supported restorations. A detailed step-by-step approach to integrating intraoral scanning into the workflow of the practice will be presented. This program is suitable for all members of the dental team.



CEU:1

Learning Objectives

After the program, participants should be able to:

- ✓ Explain the basic principles for the clinical use of intraoral scanners.
- ✓ Integrate intraoral scanning into the everyday workflow of the dental practice.
- ✓ Have a working knowledge of an intraoral scanner for impressions to fabricate implant-supported restorations.
- ✓ Describe the benefits of intraoral scanning for patients, clinicians, dental laboratory technicians, and the practice.
- ✓ Summarize the digital workflow starting with intraoral scanning through communication with the dental laboratory for optimal restorative outcomes.

DIGITAL

FULL MOUTH

DDS

DA

First Impressions Matter— Intraoral Scanning for Full-Mouth Restorations

Program Description

The evolution of digital dentistry has provided dental professionals with a new standard in delivering restorations with both aesthetic and functional outcomes. The combination of CAD/CAM technology and intraoral scanners allows restorative clinicians to collaborate with dental laboratory technicians to design and fabricate patient-specific restorations for optimal outcomes.

This program will provide an overview of the benefits of intraoral scanners and restoration fabrication for full-mouth restorations. A detailed step-by-step approach to integrating intraoral scanning into the workflow of the practice will be presented. This program is suitable for all members of the dental team.



CEU:1



Learning Objectives

After the program, participants should be able to:

- ✓ Explain the basic principles for the clinical use of intraoral scanners.
- ✓ Integrate intraoral scanning into the everyday workflow of the dental practice.
- ✓ Have a working knowledge of using an intraoral scanner for imaging full-mouth restorations on natural teeth.
- ✓ Describe the benefits of intraoral scanning for patients, clinicians, and dental laboratory technicians.
- ✓ Summarize the digital workflow starting with the intraoral scan through communication with the dental laboratory for optimal restorative outcomes.

DIGITAL

DDS

DA

First Impressions Matter— iRecord & Invisalign

Program Description

The evolution of digital dentistry has provided dental professionals with a new standard in delivering restorations with both aesthetic and functional outcomes. The combination of CAD/CAM technology and intraoral scanners allows restorative clinicians to collaborate with dental laboratory technicians to design and fabricate patient-specific restorations for optimal outcomes.

This program will provide an overview of the benefits of intraoral scanners for use with iRecord and Invisalign. A detailed step-by-step approach to integrating intraoral scanning into the workflow of the practice will be presented. This program is suitable for all members of the dental team.

 **CEU:1**



Learning Objectives

After the program, participants should be able to:

- ✓ Explain the basic principles for the clinical use of intraoral scanners.
- ✓ Integrate intraoral scanning into the everyday workflow of the dental practice.
- ✓ Have a working knowledge of using an intraoral scanner with iRecord and Invisalign.
- ✓ Summarize the digital workflow starting with the intraoral scan through communication with the dental laboratory for optimal outcomes.

SINGLE-TOOTH

RESTORATIONS

DDS

DA

Restorative Protocols— Single-Tooth Restorations

Program Description

The evolution of digital dentistry has provided dental professionals with a new standard in delivering restorations with both aesthetic and functional outcomes. The combination of CAD/CAM technology and intraoral scanners allows restorative clinicians to collaborate with the dental laboratory to design and fabricate patient-specific restorations for optimal outcomes.

This program will provide the guiding principles for optimal tooth preparation and soft-tissue management—a prerequisite for optimizing accuracy and clinical outcomes with intraoral scanning and CAD/CAM restorations. Cementation guidelines will also be presented.

**CEU:1**

Learning Objectives

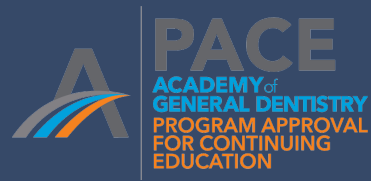
After the program, participants should be able to:

- ✓ Have a working knowledge of the guiding principles for tooth preparation and soft-tissue management.
- ✓ Describe the optimal crown preparation sequence prior to intraoral scanning.
- ✓ Design and perform optimal margin preparations.
- ✓ Identify the most appropriate burs for tooth preparation.
- ✓ Select the correct size/type of retraction cord, and properly pack cord in the sulcus prior to intraoral scanning.
- ✓ Explain the nuances of crown preparation for various restorations, including all-ceramic crowns.
- ✓ Identify the types of cement currently available, polishing techniques, and clinical procedures regarding the cementation of all ceramic restorations.



SCAN

Scan the code to start expanding your technical and clinical knowledge with DDS Lab today!



DDS Lab
Nationally approved PACE Program
Provider for FAGD/MAGD credit.
Approval does not imply acceptance by
any regulatory authority or AGD endorsement.
The current term of approval extends from 3/1/2022 - 2/28/2025
Provider ID#346122



Design. Deliver. Support.



ddslab.com
onboarding@ddslab.com
(877) 337-7800