



Tech Talk

Crown Under Partial Techniques



A patient who needs a crown placed under a partial denture is one of the more intricate impressions required in order to get a proper fitting prosthetic.

To achieve the best possible outcome, there are two techniques available, listed below in order of preference for optimal results.

- **Partial Inclusion Technique**
- **Chair Side Index Technique**

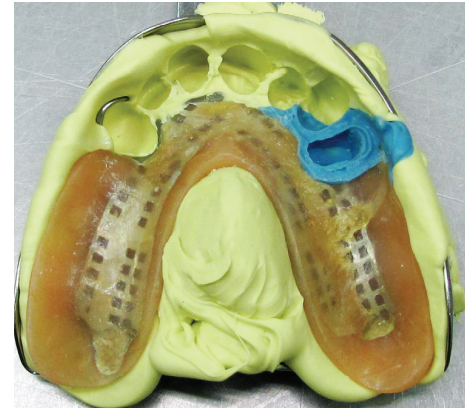
Call or chat online with our technical support team.

(877) 337-7800

Learn more at ddslab.com

Partial Inclusion Technique

Whenever possible, it's best to pull the partial in a PVS impression with the prep exposed and send it to the lab for fabrication. When using this method, make sure the partial is fully seated before taking the impression. Also, ensure that the partial is not dislodged during impressing.



It's important to note that in this technique, the partial cannot be returned separately from the final restoration. Using this method will provide the technician with the necessary information to fabricate a prosthetic that seats correctly.

Chair Side Index Technique

Another method when the partial cannot be sent is to make a partial index chair side. Put the partial in place first, and then using light body PVC squirt some impression material around the prep and capture any rest seats or clasps. Carefully take the index off of the partial and send it to the lab with the final impression. The lab will make a GC resin partial replica.



Another helpful tip when sending an index is to include a photo of the partial including any clasps or rest seats. This will help the technician to double check the index and make sure it is correct. Only highly trained technicians with an excellent eye for detail can fabricate accurate prosthetics using this impression.

Call or chat online with our technical support team.

(877) 337-7800

Learn more at ddslab.com

Consistent Results

Using these techniques will help you receive more predictable results for your crown under partial cases, thus reducing valuable chair time and creating satisfied patients. If you have further questions or concerns regarding any of these techniques, please consult with your dental lab technician.

NOTE: It is recommended to perform a dry fit try-in for either technique to ensure that everything fits accurately. This step allows for adjustments, if needed, before the final restoration is permanently cemented. Please note that DDS Lab only warrants the crown for remake if there are any fit issues, and not the original partial itself.

Use our virtual RX system, **MyDDS LAB**, online or through our mobile app

Submitting cases through our customer portal reduces Rx errors, leading to shorter turnaround times and more consistent patient scheduling. With MyDDS LAB, you can do all of this and more!

Use MyDDS LAB to...

- Submit prescriptions online
- Track cases and receive email order notifications
- Manage UPS case shipments
- View account balance and pay invoices online
- View impression reports and scores

Additional resources can be found at: ddslab.com/free-resources

About DDS Lab:

DDS Lab is a NBC member and full-service Certified Dental Lab (CDL) located in Tampa, FL. DDS Lab specializes in serving group practices and provides the perfect balance between quality products and competitive pricing. For more information, contact DDS Lab at ddslab.com or at **877-337-7800**.

 **My DDS LAB**



Learn more at ddslab.com